



Shower Witch Bathroom & Shower Cleaner 2L

Shower Witch is a gentle, easy to use, bleach free shower cleaner that is perfect for removing soap scum and grime from your shower. It is also great as a general bathroom cleaner.

How it works

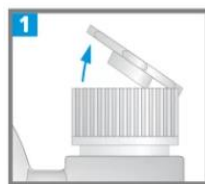
Shower Witch works by using non-ionic and cationic surfactants, a combination of biodegradable detergents to break down soap scum build up on bathroom surfaces. Shower Witch needs to be applied to a wet surface, such as after showering, left overnight, and rinsed off the next day. Shower Witch will give you the best results if used on a weekly basis.

How to apply shower Witch

- Ensure that the shower and shower screen are wet before applying.
- Set the nozzle on the trigger to the 'fan' spray setting, and mist the shower screen and surrounds with the product.
- Ensure that the entire surface has been completely covered with the product.
- Leave the product on the surface overnight and rinse off the next day.
- If the surface has a heavy build-up then it would be best to give it a good wipe down before thoroughly rinsing the product residue off the treated surface.
- For all other surfaces, spray on and then wipe off.
- To attach the trigger, remove the sticker and flip open the cap. The hose is coiled inside the sprayer, so pull it out to its full extension of approx 90cm. Firmly insert the hose tip into the bottle. Once the trigger is connected, make sure the nozzle is set to the "OFF" position after use, and transport the product upright as the product may leak through the breather hole.

Please note:

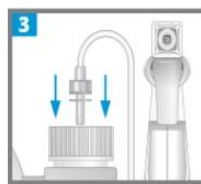
- Shower Witch will not remove any hard mineral deposits (water spotting).
- The shower base may be slippery after application.
- Rinse off thoroughly before showering.
- Always do a test patch if you have dark tiles and hard water.
- Always do a test patch for marble and stone to check compatibility.



1 Remove sticker.
Open flip cap.



2 Hose is coiled inside sprayer. Pull out and fully extend (approx. 90cm)



3 Firmly insert hose tip until a click is heard.

NOTE

Once sprayer is connected, transport upright as product may leak through cap's breather hole.